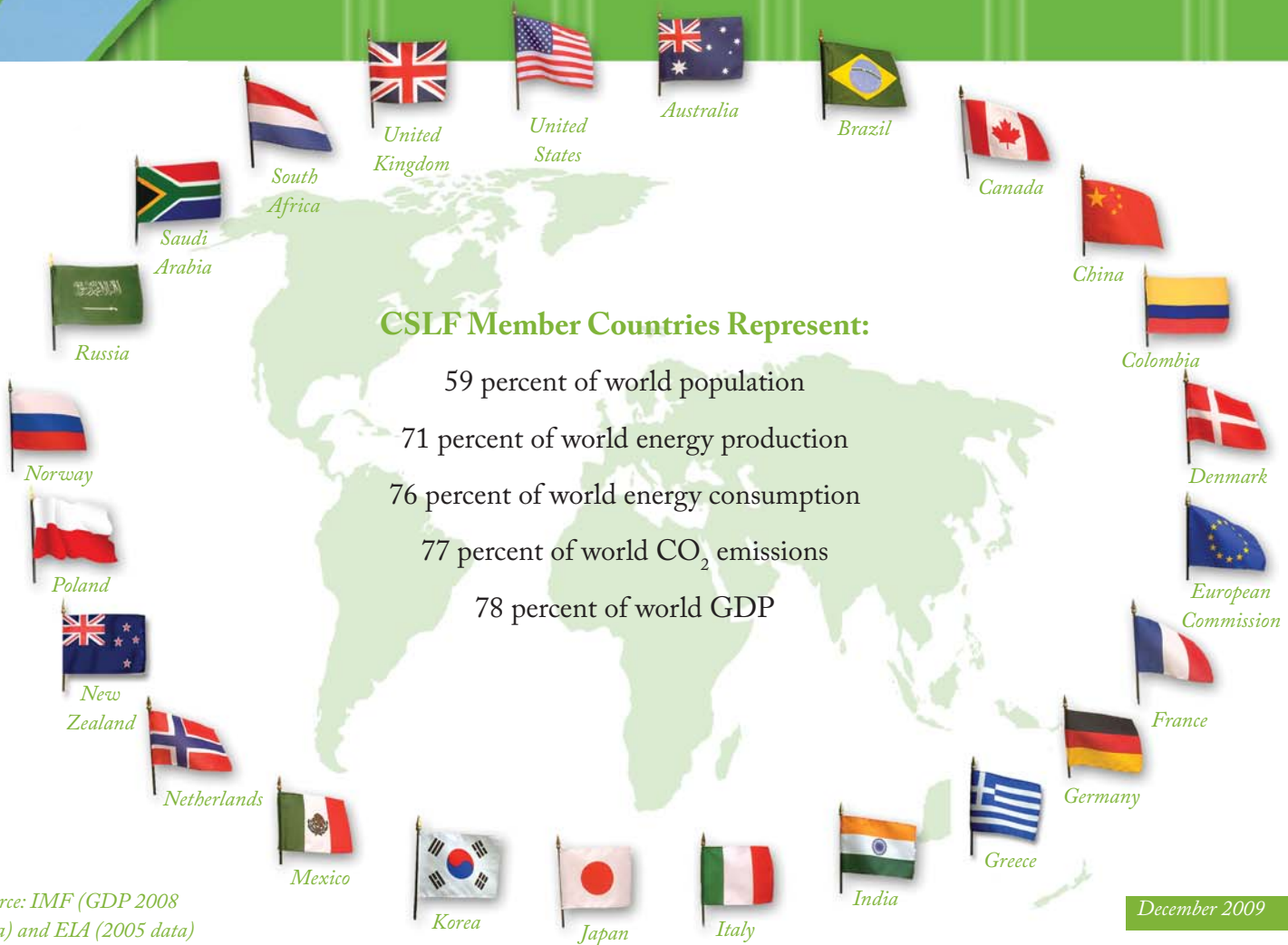


Members

carbon
sequestration leadership forum

The CSLF is currently comprised of 24 members. Membership is open to national governmental entities that are significant producers or users of fossil fuels and that have a commitment to invest resources in research, development, and demonstration activities in carbon dioxide capture and storage technologies.



Source: IMF (GDP 2008 data) and EIA (2005 data)

December 2009