



EUROPEAN
COMMISSION

Community Research

“CO₂ GeoNet”

European Network of Excellence

Geological Storage of CO₂

Prepared by

Dr. Nick Riley MBE, FGS, C.Geol

Co-ordinator

BGS Keyworth, Notts, UK

njr@bgs.ac.uk

Presented by Dr. Pierre Le Thiez, IFP

Pierre.LE-THIEZ@ifp.fr

CSLF Melbourne Sept 04





EUROPEAN
COMMISSION

Community Research

13 Partners

Denmark

Geological Survey of Denmark and Greenland –GEUS

France

Bureau de Recherches Geologiques et Minieres- BRGM
Institute Francais du Petrole –IFP

Germany

Federal Institute for Geosciences and Natural Resources –BGR

Italy

Istituto Nazionale di Oceanografia e di Geofisica Sperimentale-OGS
Università di Roma “La Sapienza” -URS

Netherlands

Netherlands Organisation for Applied Scientific Research –TNO

Norway

Norwegian Institute for Water Research –NIVA
Stiftelsen Rogalandsforskning-RF
SINTEF Petroleumforskning AS –SPR

UK

Natural Environment Research Council-British Geological Survey-BGS)
Heriot-Watt University –HWU
Imperial College of Science, Technology and Medicine-IMPERIAL





EUROPEAN
COMMISSION

Community Research

Why Network of Excellence?

Need to strengthen European Research Area (ERA):

- Align & harness national research programmes
- Jointly develop / share knowledge & research infrastructure
- Durable integration resulting in co-dependence & standardisation
- Grow the Network
- Pave the way for the next generation of researchers
- Provide authoritative geotechnical advice for Europe on CO₂ storage R&D
- Engage and collaborate with major non-EU R&D programmes & research centres





EUROPEAN
COMMISSION

Community Research

Why CO₂ storage ?

- Storage is the critical path to CCS- without storage capture is useless (capture is already possible –cost reduction & widespread commercial application are the most prominent issues)
- In the CCS chain: storage is of most concern to policymakers, regulators and the public
- Europe has led the way on CO₂ storage R&D since 1991 (Joule 2) (the core group of research partners forms a critical mass of established joint research activity upon which the existing and new R&D entrants can develop)
- Open public-domain dissemination of R&D on storage is more likely to be achieved earlier than capture; as it is commercially less sensitive than developing capture technologies





EUROPEAN
COMMISSION

Community Research

Resourcing

Launched April 2004

Budget over 5 years

EC Contribution- €6million

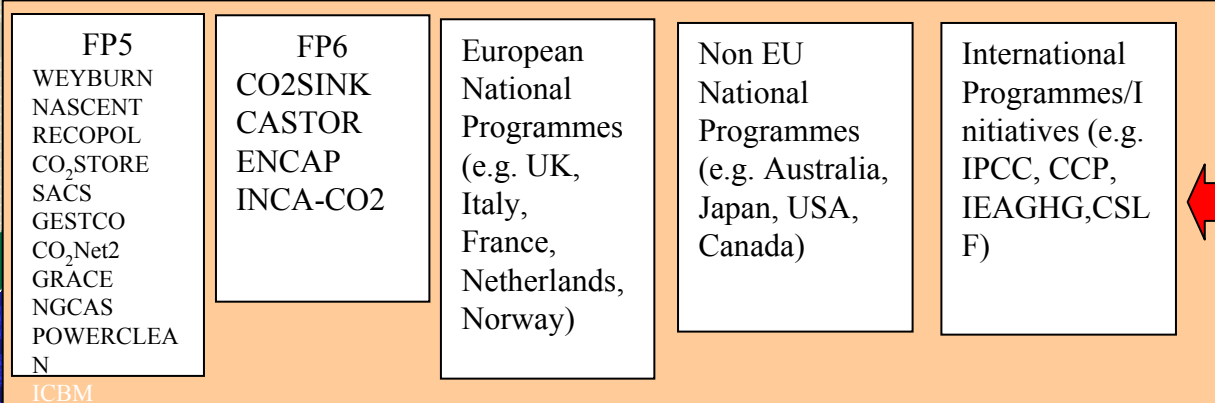
Network Partners and external funding- €3million

Beyond 2009 the Network has to be funded independently of the EC

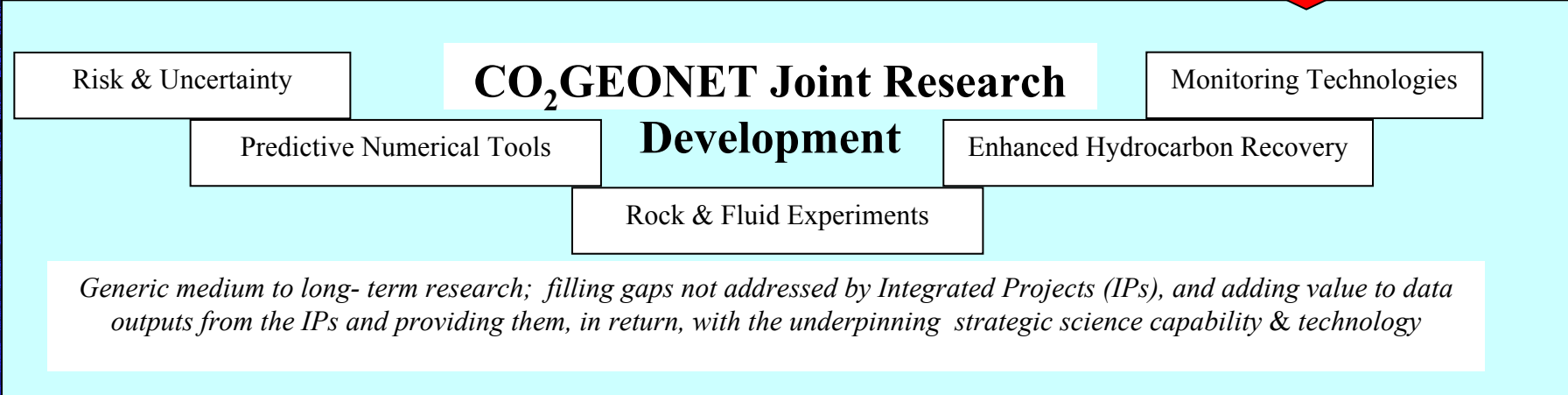




EUROPEAN COMMISSION



STRENGTHEN EUROPEAN RESEARCH AREA (ERA) THROUGH INTEGRATION, REDUCING OVERLAP & FRAGMENTATION. SUSTAIN THE ERA THROUGH TRAINING, ALIGNING & DEVELOPING RESEARCH PROGRAMMES

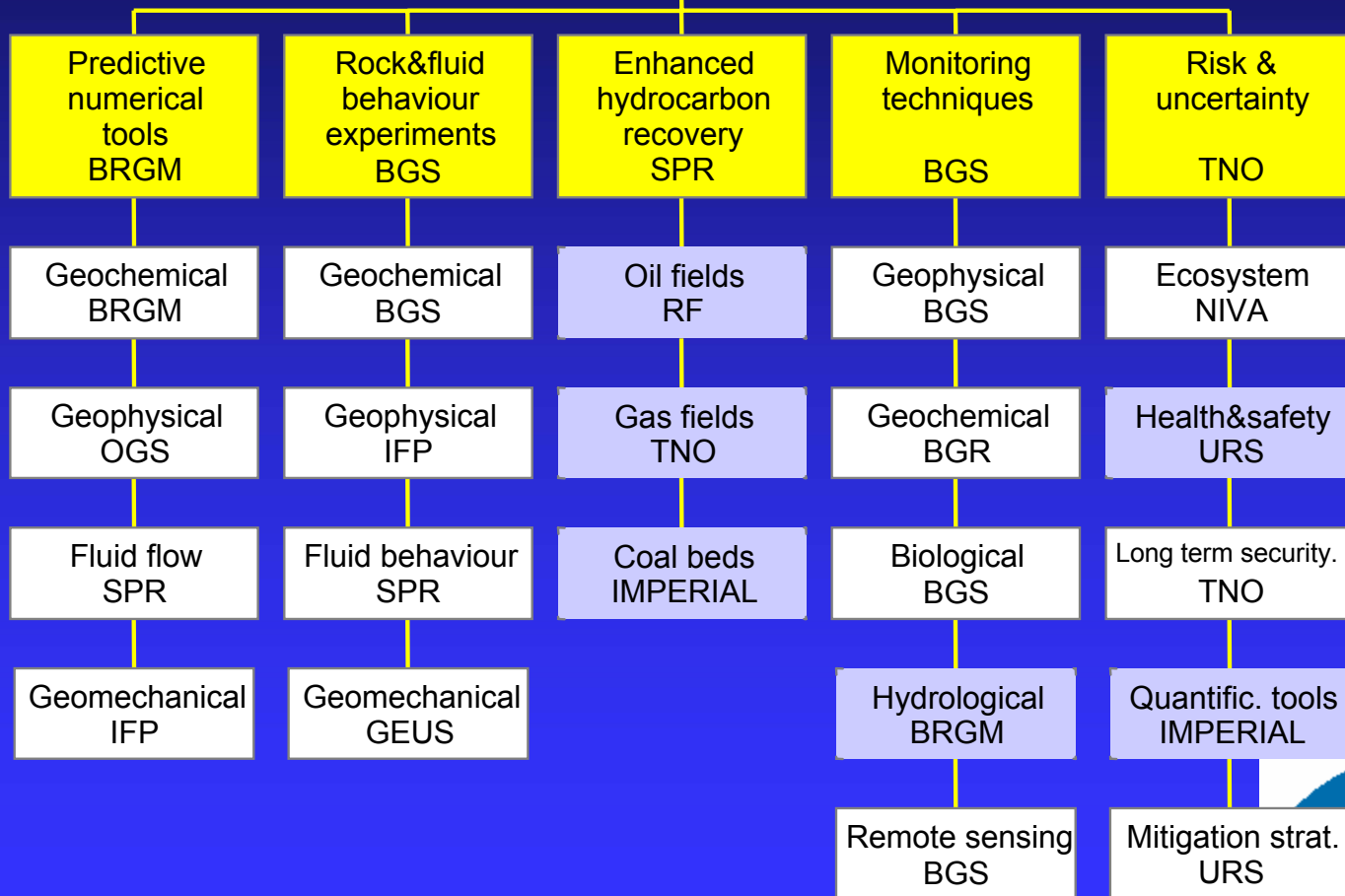


DISSEMINATION TO POLICYMAKERS-REGULATORS- COMMERCE- PUBLIC
 FEEDBACK FROM THESE STAKEHOLDERS INTO NoE STRATEGIC RESEARCH PRIORITIES



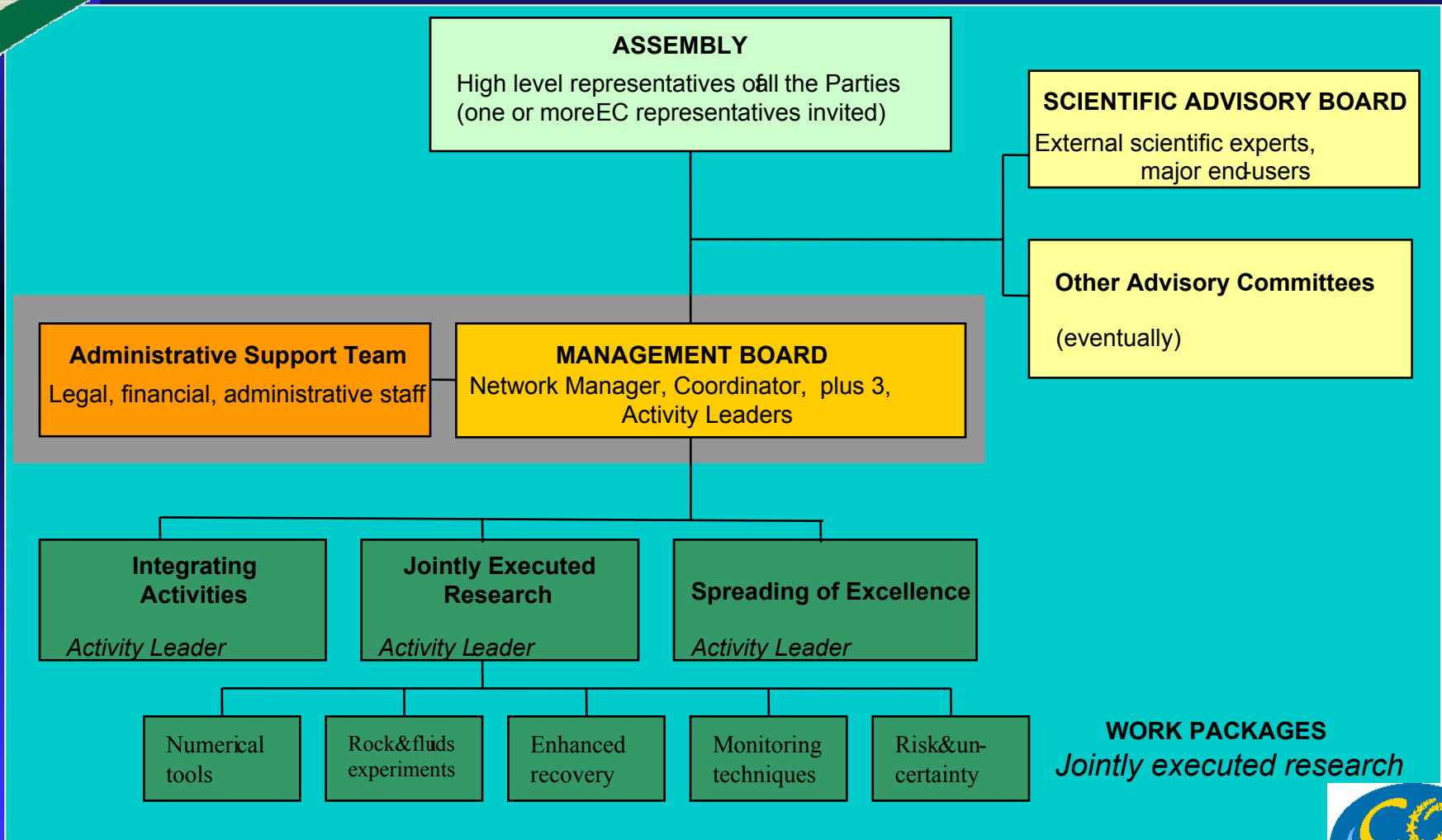


Joint Research Activities





Management structure





EUROPEAN
COMMISSION

Community Research

Joint Research Activities are reviewed annually.
The next review (Jan-March 2005) will take into particular account:

Alignment with evolving EC and national/international Initiatives

Addressing R&D where there is a market gap; or the issues are too sensitive for the commercial sector to handle

Issues where clear impartiality is required to aid public acceptance





EUROPEAN
COMMISSION

Community Research

We recommend that CSLF member countries consider forming national/regional networks as crucial building blocks- particular for the R&D community- they are key stakeholders in CCS

CO₂GeoNet would very much like to collaborate with CSLF Countries and their R&D programmes.

Thank you for your attention!

CONTACT: Dr. Nick Riley, Co-ordinator, njr@bgs.ac.uk

